



ECONAVI

NEW ECONAVI SYSTEM ECO INTELLIGENCE BY DESIGN

Going green and saving energy shouldn't compromise on your comfortable lifestyle. That is why the inverter – with its exceptional energy-saving performances – has been introduced to our air conditioners.

At the same time, individuals also get to enjoy the Advanced+Plus e-ion Air Purifying System with the Patrol Sensor for cleaner air. Both advanced features have been designed to improve quality of life. With the same concerns in mind, Panasonic is introducing a new Econavi concept – an intelligent eco function with automatic detection which further reduces energy waste.

This enables individuals to save energy easily and thus improve the environment. Imagine what millions of people around the world can change with Econavi. A more sustainable future is possible.



THE NEW ETHEREA RANGE PURE EFFICIENCY WITH ECONAVI

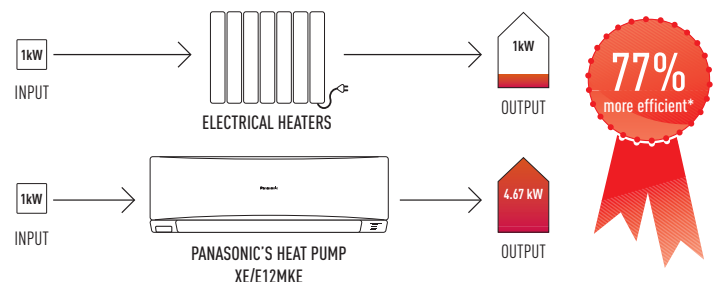
Panasonic's new Etherea units offer maximum efficiency in every sense. They ensure minimum consumption, thanks to the new ECONAVI system, which intuits the level of human presence in a room and their level of activity and adjusts output accordingly. This feature provides up to 40% energy savings on heating mode, and up to 30% energy savings on cooling mode.

INTRODUCING ECONAVI – A SYSTEM WHICH SAVES ENERGY BY REDUCING WASTE

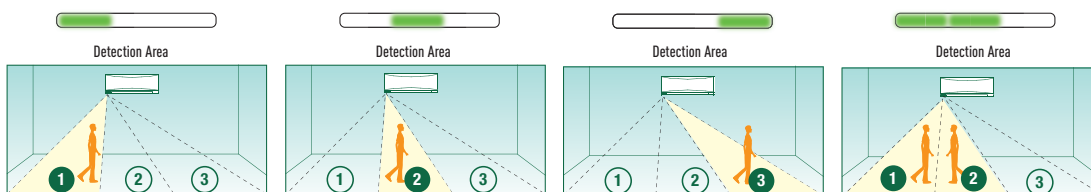
The ECONAVI concept applies high precision Human Sensor and Control Program technologies to optimise air conditioner operation according to room conditions. How does it save energy? By using technology to detect areas in which energy is normally wasted and self-adjusting cooling power. Thus, it helps you to save energy efficiently with uninterrupted cooling, comfort and convenience.

ECONOMICAL, ENVIRONMENT-FRIENDLY OPERATION HIGH COP (COEFFICIENCY OF PERFORMANCE)

Original Panasonic Inverter technology and a high-performance compressor provide top-class operating efficiency. This lets you enjoy lower electricity bills while contributing to environmental protection.



*On heating mode, XE/E12MKE compared with electrical heaters at +7°C



30% savings
ECONAVI



ABSENCE: SAVE ENERGY

ADJUSTS AIRFLOW DIRECTION

HIGH ACTIVITY: AUTOMATIC ADJUSTMENT OF THE SET TEMPERATURE

ONE-TOUCH ECONAVI REDUCES WASTE IN THREE SIMPLE STEPS:

It examines

- Levels of activity
- Human presence

It assesses

- Changes in human location
- Changes in human activity
- Changes in human presence

and executes

- Adjusts airflow direction
- High activity: automatic adjustment of the set temperature
- Absence: saves energy

eco ideas

19692
eco

'ECO IDEAS' FOR LIFESTYLES: WE WILL PROMOTE LIFESTYLES WITH VIRTUALLY ZERO CO₂ EMISSIONS THROUGHOUT THE WORLD.

'ECO IDEAS' FOR BUSINESS-STYLES: WE WILL CREATE AND PURSUE BUSINESS-STYLES THAT MAKE THE BEST USE OF RESOURCES AND ENERGY.

PANASONIC HEATING AND COOLING SYSTEMS

With more than 30 years of experience, exporting to more than 120 countries around the world, Panasonic is unquestionably one of the leaders in the air conditioning sector. The company is also a world leader in innovation as it has filed more than 95,025 patents to improve its customers' lives. Moreover, Panasonic is determined to remain at the forefront of its market – thanks to more than 500 researchers working in European laboratories to design increasingly innovative products. In all, the company has produced more than 100 million compressors and its products are manufactured in 294 plants which are located all over the world. You can be assured of the extremely high quality of Panasonic's air conditioners.

This wish to excel has made Panasonic the international leader in heating and air conditioning solutions. The company's industrial capacity and firm commitment to the environment has enabled it to open new avenues of research and to develop innovative technologies which enhance its customers' way of life.

Panasonic offers a range of turnkey heating and air conditioning solutions for homes, medium-sized buildings such as offices and restaurants, and large-scale buildings. These offer maximum effectiveness, comply with the strictest environmental standards and meet the most avant-garde construction requirements of our time.

At Panasonic we know what a great responsibility it is to install heating and cooling systems. Because offering you the best solutions in heating and cooling matters.

EVERYTHING MATTERS



ECONAVI sensor determine the human activity level adjust the air flow orientation for maximum comfort and maximum savings.



The E-ion+ system eliminates 99% of bacteria, viruses and mildew from the air.



The Patrol Sensor is on guard 24 hours a day to ensure optimal air quality.



The Perfect Humidity Air controls the humidity level in the air to prevent over-dryness.



The Soft Breeze mode eliminates excess humidity with a soft breeze and gives you the feeling of well-being without significant temperature changes.



The A Inverter system provides energy savings of up to 50%. You win and nature wins.



Provides more precise temperature control, without highs and lows, and keeps the ambient temperature constant.



The Autocomfort system detects conditions in the room and switches to energy saving operation when nobody is on the room.



With Super Quiet technology our devices are as quiet as a library.



Down to -15°C in heat pump. The air conditioner works in heat pump mode with an outdoor temperature as low as -15°C.



Down to -15°C in cooling only mode. The air conditioner works in cooling only mode with an outdoor temperature of -15°C.



The super alleru-buster filter eliminates the allergens, viruses and bacteria it captures to keep room air clean and healthy.



5 YEARS Warranty on the compressor.



Eurovent certification programme. Panasonic is participating in the Eurovent Certification Programme. Products are as listed in the Eurovent Directory of Certified Products.

Panasonic®

To find out how Panasonic cares for you,
log on to: www.panasonic.eu

Contact Details:

E-mail: paul.taylor@eu.panasonic.com
Telephone: 01344 853182
www.panasonic.co.uk/aircon

Address: Panasonic Air Conditioning

Panasonic House
Willoughby Road
Bracknell
Berkshire
RG12 8FP

Panasonic
ideas for life

DOMESTIC // HEATING AND COOLING SYSTEMS

2011



EVERY
ROOM
MATTERS



—ETHEREA—

heatingandcoolingsystems

ADVANCED+PLUS.

E-ION AIR PURIFYING SYSTEM WITH PATROL SENSOR

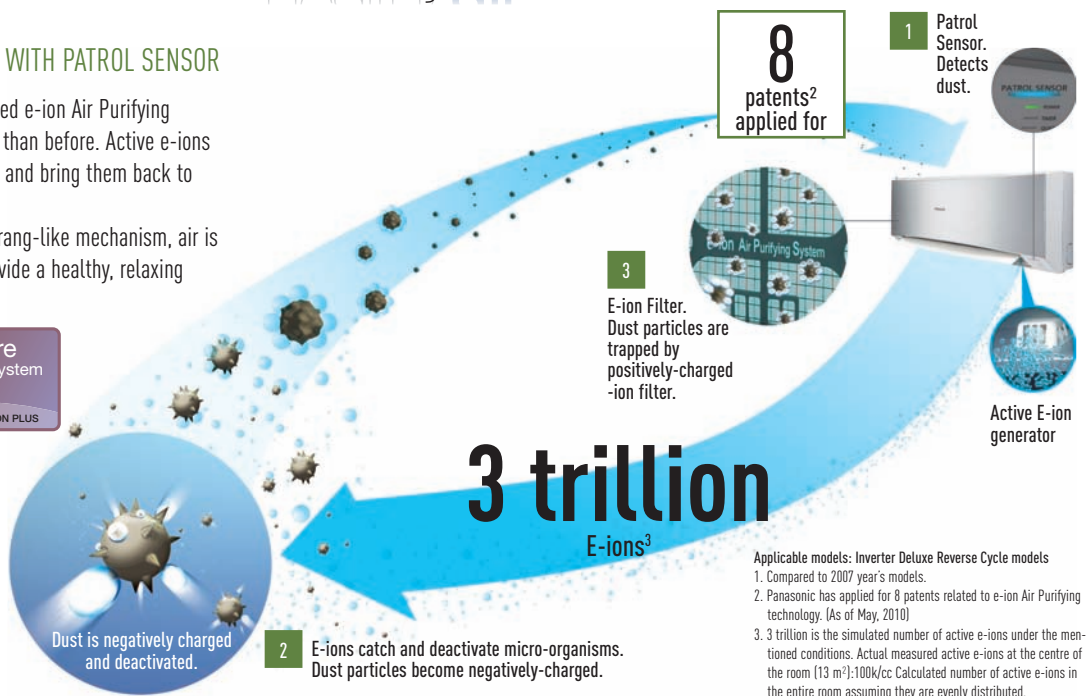
Panasonic's original, highly acclaimed e-ion Air Purifying System is now 15%¹ more efficient than before. Active e-ions are released to catch dust particles and bring them back to the large filter.

Thanks to this revolutionary boomerang-like mechanism, air is purified throughout the room to provide a healthy, relaxing living environment.

30% savings
ECONAVI

perfect humidity control
MILD DRY

pure air system
e-ION PLUS



8 patents² applied for

1 Patrol Sensor. Detects dust.

3 E-ion Filter. Dust particles are trapped by positively-charged -ion filter.

Active E-ion generator

3 trillion E-ions³

Applicable models: Inverter Deluxe Reverse Cycle models
 1. Compared to 2007 year's models.
 2. Panasonic has applied for 8 patents related to e-ion Air Purifying technology. (As of May, 2010)
 3. 3 trillion is the simulated number of active e-ions under the mentioned conditions. Actual measured active e-ions at the centre of the room (13 m³):100k/cc Calculated number of active e-ions in the entire room assuming they are evenly distributed.

This is Panasonic's revolutionary mechanism

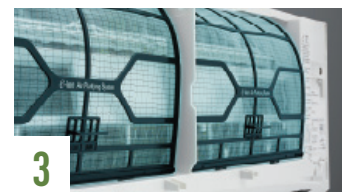
Air is monitored both during air conditioner operation and when it's switched off. When dirt is detected, the air purifying function is started to immediately clean the air in the room.



1 DETECTS
Patrol Sensor. The sensor measures the dirt in the air, and above a certain level the air is judged to be dirty. If dirt concentration exceeds the sensing level, the Air Purifying System is switched on.



2 CATCHES & INACTIVATES
E-Ion Action. Three trillion e-ions are released to catch floating dust particles. The ions also deactivate bacteria and viruses.

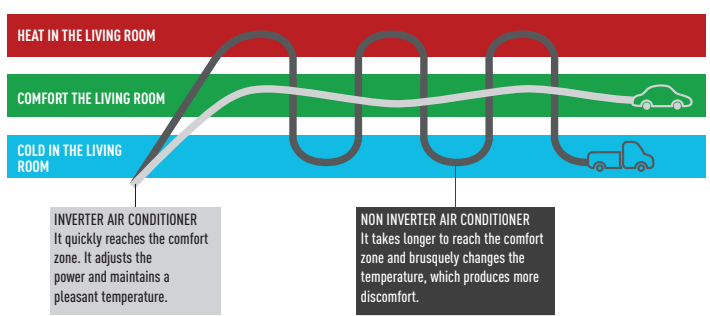


3 CAPTURES ELECTRICALLY
E-Ion filter. The filter is positively-charged, so negatively-charged dust particles are electrically attracted. This electrical action assures that dust is efficiently captured.

OUTSTANDING ENERGY-SAVING PERFORMANCE

You will always be comfortable with an Inverter air conditioner. After reaching the set temperature quickly, the power will be adjusted smoothly to keep the temperature constant. So, there will be no sharp temperature changes and you will save power. The ample range of output powers also guarantees a pleasant temperature at all times, even when the number of people in the room fluctuates. This way, Inverter air conditioners provide more precise temperature control than non-Inverter models.

INVERTER

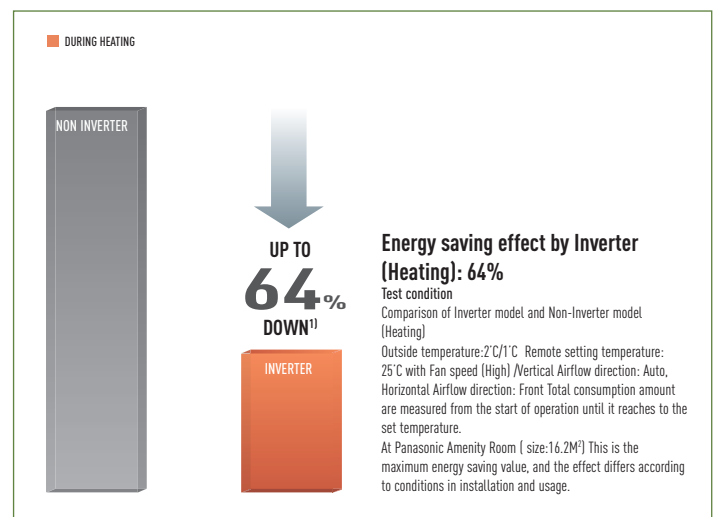


INVERTER AIR CONDITIONER
 It quickly reaches the comfort zone. It adjusts the power and maintains a pleasant temperature.

NON INVERTER AIR CONDITIONER
 It takes longer to reach the comfort zone and brusquely changes the temperature, which produces more discomfort.

64% Cut in power consumption on heating mode for big savings*

Panasonic Inverter air conditioners provide exceptional energy-saving performance that ranks among the highest in the industry. This dramatically cuts electricity consumption and CO₂ emissions, allowing an environment-friendly operation.



Energy saving effect by Inverter (Heating): 64%
 Test condition
 Comparison of Inverter model and Non-Inverter model (Heating)
 Outside temperature: 2°C/1°C Remote setting temperature: 25°C with Fan speed (High) / Vertical Airflow direction: Auto, Horizontal Airflow direction: Front Total consumption amount are measured from the start of operation until it reaches to the set temperature.
 At Panasonic Amenity Room (size:16.2M²) This is the maximum energy saving value, and the effect differs according to conditions in installation and usage.

1) Comparison of cumulative electricity consumption during heating to reach the setting temperature (Panasonic in-house comparison) Test conditions: Indoor and outdoor temperature: 7°C/ Setting temperature: 25°C/ Fan speed: High.

NEW
2011

WALL MOUNTED ETHEREA
INVERTER+ // SILVER



KIT-XE7-MKE // KIT-XE9-MKE // KIT-XE12-MKE // KIT-XE15-MKE



KIT-XE18-MKE // KIT-XE21-MKE



CU-E7MKE
CU-E9MKE
CU-E12MKE
CU-E15MKE

CU-E18MKE
CU-E21MKE



INCLUDED
WITH THE
INDOOR
UNIT



OPTIONAL
WIRED REMOTE
CONTROL
CZ-RD514C



Maintains a Relative Humidity up to 10% higher than cooling operation. Ideal when sleeping with the air conditioner on.

FOR XE7, XE9 AND XE12

NEW
2011

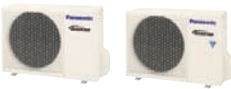
WALL MOUNTED ETHEREA
INVERTER+ // WHITE



KIT-E7-MKE // KIT-E9-MKE // KIT-E12-MKE // KIT-E15-MKE



KIT-E18-MKE // KIT-E21-MKE // KIT-E24-MKE // KIT-E28-MKE



CU-E7MKE
CU-E9MKE
CU-E12MKE
CU-E15MKE

CU-E18MKE
CU-E21MKE



INCLUDED
WITH THE
INDOOR
UNIT



OPTIONAL
WIRED REMOTE
CONTROL
CZ-RD514C



Maintains a Relative Humidity up to 10% higher than cooling operation. Ideal when sleeping with the air conditioner on.

FOR XE7, XE9 AND XE12

WALL MOUNTED RE TYPE
STANDARD INVERTER



KIT-RE9-JKE-1 // KIT-RE12-JKE-1 // KIT-RE15-JKE-1



KIT-RE18-JKE-1 // KIT-RE24-JKE-1



CU-RE9JKE-1
CU-RE12JKE-1
CU-RE15JKE-1

CU-RE18JKE-1

CU-RE24JKE-1



FOR RE9, RE12 AND RE15. INCLUDED WITH THE INDOOR UNIT



FOR RE18 AND RE24. INCLUDED WITH THE INDOOR UNIT



FOR RE9 AND RE12

	Cooling capacity Nominal (Min-Max) kW	EER ¹⁾ Nominal (Min-Max)	Heating capacity Nominal (Min-Max) kW	COP ¹⁾ Nominal (Min-Max)	Power input Cooling/Heating Nominal (Min-Max) kW	Sound pressure Level ²⁾ Cooling/Heating dB(A)	Indoor Dimensions mm (H x W x D)	Outdoor Dimensions mm (H x W x D)
ETHEREA // INVERTER+ // SILVER / WHITE								
KIT-XE7-MKE / E7-MKE	2,05 (0,75-2,40)	4,36 (3,13-4,14) A	2,80 (0,75-4,00)	4,41 (3,26-3,92) A	0,470 (0,240-0,580) / 0,635 (0,230-1,020)	20 / 20	290 x 870 x 204	540 x 780 x 289
KIT-XE9-MKE / E9-MKE	2,50 (0,85-3,00)	4,67 (4,47-4,11) A	3,40 (0,85-5,00)	4,63 (3,54-3,85) A	0,535 (0,245-0,730) / 0,735 (0,240-1,300)	20 / 20	290 x 870 x 204	540 x 780 x 289
KIT-XE12-MKE / E12-MKE	3,50 (0,85-4,00)	4,07 (3,40-3,54) A	4,00 (0,85-6,00)	4,21 (3,47-3,51) A	0,860 (0,250-1,130) / 0,950 (0,245-1,710)	20 / 20	290 x 870 x 204	540 x 780 x 289
KIT-XE15-MKE / E15-MKE	4,20 (0,85-5,00)	3,33 (3,27-3,18) A	5,30 (0,80-6,80)	3,68 (3,33-3,51) A	1,260 (0,260-1,570) / 1,440 (0,255-1,940)	25 / 29	290 x 870 x 204	540 x 780 x 289
KIT-XE18-MKE / E18-MKE	5,00 (0,98-6,00)	3,40 (3,50-2,96) A	5,80 (0,98-8,00)	3,77 (2,88-3,08) A	1,470 (0,280-2,030) / 1,540 (0,340-2,600)	34 / 34	290 x 1.070 x 235	695 x 875 x 320
KIT-XE21-MKE / E21-MKE	6,30 (0,98-7,10)	2,85 (3,50-2,80) C	7,20 (0,98-8,50)	3,43 (2,88-3,09) B	2,210 (0,280-2,540) / 2,100 (0,340-2,750)	34 / 34	290 x 1.070 x 235	695 x 875 x 320
KIT-E24-MKE	6,80 (0,98-8,10)	3,21 (2,58-3,00) A	8,60 (0,98-9,90)	3,23 (2,18-3,09) C	2,120 (0,380-2,700) / 2,660 (0,540-3,200)	35 / 35	290 x 1.070 x 235	795 x 875 x 320
KIT-E28-MKE	7,65 (0,98-8,60)	3,01 (2,58-2,92) B	9,60 (0,98-11,00)	2,91 (2,18-2,93) D	2,540 (0,380-2,950) / 3,300 (0,450-3,750)	35 / 35	290 x 1.070 x 235	795 x 875 x 320
RE TYPE STANDARD INVERTER								
KIT-RE9-JKE-1	2,50 (0,90-3,00)	3,57 (4,74-3,00) A	3,30 (0,90-4,10)	4,02 (5,29-3,57) A	0,700 (0,190-1,000) / 0,820 (0,170-1,150)	22 / 25	290 x 848 x 204	540 x 780 x 289
KIT-RE12-JKE-1	3,50 (0,90-3,90)	3,47 (5,29-3,25) A	4,25 (0,90-5,10)	3,79 (6,00-3,49) A	1,010 (0,170-1,200) / 1,120 (0,150-1,460)	22 / 25	290 x 848 x 204	540 x 780 x 289
KIT-RE15-JKE-1	4,20 (1,00-4,60)	3,33 (4,76-2,78) A	5,00 (0,90-6,80)	3,61 (4,28-2,98) A	1,260 (0,210-1,650) / 1,385 (0,210-2,280)	29 / 28	290 x 848 x 204	540 x 780 x 289
KIT-RE18-JKE-1	5,00 (0,90-6,00)	3,40 (4,19-2,96) A	5,80 (0,90-8,00)	3,77 (3,67-3,08) A	1,470 (0,215-2,030) / 1,540 (0,245-2,600)	37 / 37	290 x 1.070 x 235	750 x 875 x 345
KIT-RE24-JKE-1	6,80 (0,90-8,10)	3,21 (2,57-3,00) A	8,60 (0,90-9,90)	3,23 (2,50-3,09) C	2,120 (0,350-2,700) / 2,660 (0,360-3,200)	38 / 38	290 x 1.070 x 235	795 x 875 x 320

GLOBAL REMARKS	Rating conditions	
	Cooling	Heating
	Inside air temperature Outside air temperature	27°C DB / 19°C WB 35°C DB / 24°C WB

DB: Dry Bulb; WB: Wet Bulb

This model is not suitable to use in heating mode below -5°C with continuous operation (24h operation). Connectivity restriction: JKE units are not compatible with MKE units.

1) EER and COP classification is at 230 V in accordance with EU directive 2002/31/EC.

2) The Sound pressure level of the units shows the value measured at a position 1 meter in front of the main body and 0,8 meters below the unit. The sound pressure is measured in accordance with Eurovent 6/C/006-97 specification.

FLOOR CONSOLE TYPE // INVERTER+



CU-E9GFE-1
CU-E12GFE-1

CU-E18GFE-1



KIT-E9-GFEW-1 // KIT-E12-GFEW-1 // KIT-E18-GFEW-1



SINGLE SPLIT FLOOR OR CEILING TYPE // INVERTER



CU-E15DTE
CU-E18DTE
CU-E21DTE



KIT-E15-DTE // KIT-E18-DTE // KIT-E21-DTE

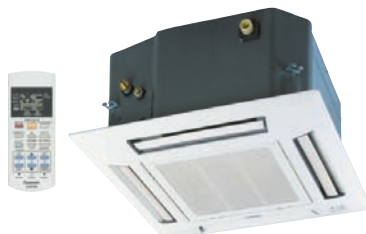


OPTIONAL

4 WAY 60X60 CASSETTE INVERTER+



CU-E10HBEA CU-E18HBEA
CU-E15HBEA CU-E21HBEA



KIT-E10-KB4EA // KIT-E15-HB4EA // KIT-E18-HB4EA // KIT-E21-HB4EA



OPTIONAL

LOW STATIC PRESSURE HIDE AWAY // INVERTER +



CU-E10HBEA
CU-E15HBEA
CU-E18HBEA



KIT-E10-KD3EA // KIT-E15-JD3EA // KIT-E18-JD3EA



	Cooling capacity Nominal (Min - Max) kW	EER ¹⁾ Nominal (Min-Max)	Heating capacity Nominal (Min-Max) kW	COP ¹⁾ Nominal (Min-Max)	Power input Cooling/Heating Nominal (Min-Max) kW	Sound pressure Level ²⁾ Cooling/Heating dB(A)	Dimensions Indoor (H x W x D) mm	Dimensions Outdoor mm (H x W x D)
FLOOR CONSOLE TYPE // INVERTER+								
KIT-E9-GFEW-1	2,50 (0,80-3,00)	4,39 (4,57-3,85) A	3,60 (0,80-5,00)	4,16 (4,85-3,68) A	0,57 (0,17-0,78) / 0,865 (0,16-1,36)	23 / 23	600 x 700 x 210	540 x 780 x 289
KIT-E12-GFEW-1	3,50 (0,80-3,80)	3,63 (4,32-3,33) A	4,80 (0,80-6,10)	3,64 (4,57-3,45) A	0,97 (0,18-1,14) / 1,32 (0,17-1,77)	24 / 23	600 x 700 x 210	540 x 780 x 289
KIT-E18-GFEW-1	5,00 (0,90-5,60)	3,23 (4,57-2,93) A	5,80 (0,90-7,10)	3,63 (3,46-3,02) A	1,55 (0,25-1,91) / 1,60 (0,26-2,35)	32 / 32	600 x 700 x 210	750 x 875 x 345
SINGLE SPLIT FLOOR OR CEILING TYPE // INVERTER								
KIT-E15-DTE	4,15 (0,90-4,55)	3,22 (3,53-2,94) A	5,17 (0,90-6,30)	3,34 (3,46-3,07) C	1,29 (0,255-1,55) / 1,55 (0,26-2,05)	34 / 30	540 x 1.028 x 200	750 x 875 x 345
KIT-E18-DTE	5,00 (0,90-5,40)	3,01 (3,53-2,86) B	6,10 (0,90-7,60)	3,35 (3,46-3,19) C	1,66 (0,255-1,89) / 1,82 (0,26-2,38)	36 / 32	540 x 1.028 x 200	750 x 875 x 345
KIT-E21-DTE	5,80 (0,90-6,60)	3,01 (3,53-2,95) B	6,80 (0,90-8,10)	3,42 (3,46-3,06) B	1,93 (0,255-2,24) / 1,99 (0,26-2,65)	38 / 34	540 x 1.028 x 200	750 x 875 x 345
4 WAY 60X60 CASSETTE // INVERTER+								
KIT-E10-KB4EA	2,50 (0,60-3,20)	4,03 (4,14-3,68) A	3,20 (0,60-5,10)	3,90 (4,80-3,51) A	0,62 (0,145-0,87) / 0,82 (0,125-1,45)	23 / 25	260 x 575 x 575	540x780+70 ³⁾ x289
KIT-E15-HB4EA	4,10 (0,90-4,80)	3,15 (3,48-3,27) B	5,10 (0,90-6,20)	2,88 (3,46-2,84) D	1,30 (0,255-1,17) / 1,77 (0,26-2,18)	23 / 25	260 x 575 x 575	750x875+70 ³⁾ x345
KIT-E18-HB4EA	4,80 (0,90-5,70)	3,14 (3,53-2,95) B	5,60 (0,90-7,10)	2,95 (3,46-2,90) D	1,539 (0,255-1,93) / 1,90 (0,26-2,45)	25 / 26	260 x 575 x 575	750x875+70 ³⁾ x345
KIT-E21-HB4EA	5,90 (0,90-6,30)	2,88 (3,52-2,86) C	7,00 (0,90-8,00)	2,86 (3,46-2,84) D	2,05 (0,255-2,20) / 2,45 (0,26-2,82)	30 / 31	260 x 575 x 575	750x875+70 ³⁾ x345
LOW STATIC PRESSURE HIDE AWAY // INVERTER +								
KIT-E10-KD3EA	2,50 (0,80-3,00)	3,68 (3,87-3,53) A	3,20 (0,60-5,00)	3,64 (4,44-3,27) A	0,68 (0,155-0,85) / 0,88 (0,135-1,53)	24 / 25	235x750+65 ³⁾ x370	540x780+70 ³⁾ x289
KIT-E15-JD3EA	4,10 (0,90-4,70)	3,31 (3,53-3,13) A	4,80 (0,90-55,0)	2,64 (3,46-2,63) E	1,24 (0,255-1,50) / 1,82 (0,26-2,09)	24 / 25	235x750+65 ³⁾ x370	750x875+70 ³⁾ x345
KIT-E18-JD3EA	5,10 (0,90-5,70)	3,15 (3,53-3,10) B	6,10 (0,90-7,10)	3,30 (3,46-3,23) C	1,62 (0,250-1,84) / 1,85 (0,26-2,20)	27 / 29	235x750+65 ³⁾ x370	750x875+70 ³⁾ x345

GLOBAL REMARKS	Rating conditions	
	Cooling	Heating
	Inside air temperature	27°C DB / 19°C WB
Outside air temperature	35°C DB / 24°C WB	7°C DB / 6°C WB

DB: Dry Bulb; WB: Wet Bulb

This model is not suitable to use in heating mode below -5°C with continuous operation (24h operation). Connectivity restriction: JKE units are not compatible with MKE units.

1) EER and COP classification is at 230 V in accordance with EU directive 2002/31/EC.

2) The Sound pressure level of the units shows the value measured of a position 1 meter in front of the main body and 0,8 meters below the unit. The sound pressure is measured in accordance with Eurovent 6/C/006-97 specification.

3) Add 70 mm for piping port.

PANASONIC'S MULTI SPLIT. CONDITIONS MORE, CONSUMES LESS

If air conditioning requirements exceed the ambit of a single room, Panasonic offers you a very extensive range of possibilities with up to 4 indoor units connected to a single outdoor unit. In this way, not only is the purchase price cheaper, the installation easier, the space for the outdoor units reduced and the elevation difference bigger, but consumption is also reduced enormously. This is because the consumption of one outdoor unit which powers four indoor units is much less than the sum of four outdoor units of individual splits. You can reduce consumption by up to 36% using the multi-split as opposed to the 1x1!*

REDUCE CONSUMPTION BY UP TO **36%***

NEW 2011

ETHEREA MULTI SPLIT 2X1 INVERTER+



KIT-2XE77-MBE // KIT-2XE79-MBE // KIT-2XE712-MBE // KIT-2XE99-MBE // KIT-2XE99-MKE // KIT-2XE912-MKE // KIT-2XE1212-MKE



KIT-2E77-MBE // KIT-2E79-MBE // KIT-2E712-MBE // KIT-2E99-MBE // KIT-2E99-MKE // KIT-2E912-MKE // KIT-2E1212-MKE



NEW 2011

ETHEREA MULTI SPLIT 3X1 INVERTER+



CU-3E18LBE



KIT-3XE7712-MBE // KIT-3XE7715-MBE



KIT-3E7712-MBE // KIT-3E7715-MBE



NEW 2011

ETHEREA MULTI SPLIT 4X1 INVERTER+



CU-4E23LBE

CU-4E27CBPG



KIT-4XE7712-MBE // KIT-4XE7715-MBE // KIT-4XE7712-MKE // KIT-4XE7715-MKE



KIT-4E7712-MBE // KIT-4E7715-MBE // KIT-4E7712-MKE // KIT-4E7715-MKE



* Standard conditions: 2.5 m High ceiling; 1 person per 10 m²; 70 w lighting per 10 m²; 1.5 m² window per 10 m² oriented east or west; good thermal insulation on the walls.

	Cooling capacity Nominal (Min-Max) kW	EER ¹⁾ Nominal (Min-Max)	Heating capacity Nominal (Min-Max) kW	COP ¹⁾ Nominal (Min-Max)	Power input Cooling/Heating Nominal (Min-Max) kW	Sound pressure Level ²⁾ Cooling/Heating dB(A)	Dimensions Indoor mm (H x W x D)	Dimensions Outdoor mm (H x W x D)
ETHEREA MULTI SPLIT 2x1 // INVERTER+								
KIT-2XE77-MBE/2E77-MBE	4,00 (1,50-5,00)	3,66 (6,00-3,70) A	5,40 (1,10-7,00)	4,62 (5,24-4,19) A	1,09 (0,25-1,35) / 1,17 (0,21-1,67)	26	290 x 870 x 204	540 x 780-70 ³⁾ x 289
KIT-2XE79-MBE/2E79-MBE	4,50 (1,50-5,20)	3,66 (6,00-3,70) A	5,40 (1,10-7,00)	4,62 (5,24-4,19) A	1,23 (0,25-1,52) / 1,17 (0,21-1,67)	26	290 x 870 x 204	540 x 780-70 ³⁾ x 289
KIT-2XE712-MBE/2E712-MBE	4,50 (1,50-5,20)	3,66 (6,00-3,42) A	5,40 (1,10-7,0)	4,62 (4,61-4,19) A	1,23 (0,25-1,53) / 1,17 (0,21-1,67)	26(E7)-29(E12)	290 x 870 x 204	540 x 780-70 ³⁾ x 289
KIT-2XE99-MBE/2E99-MBE	4,50 (1,50-5,20)	3,66 (6,00-3,42) A	5,40 (1,10-7,0)	4,62 (4,61-4,19) A	1,23 (0,25-1,52) / 1,17 (0,21-1,67)	26	290 x 870 x 204	540 x 780-70 ³⁾ x 289
KIT-2XE99-MKE/2E99-MKE	4,80 (1,50-5,20)	3,66 (6,00-3,42) A	5,60 (1,10-7,20)	4,48 (5,24-4,14) A	1,31 (0,25-1,52) / 1,25 (0,21-1,74)	26	290 x 870 x 204	540 x 780-70 ³⁾ x 289
KIT-2XE912-MKE/2E912-MKE	5,00 (1,50-5,30)	3,36 (6,00-3,44) A	5,60 (1,10-7,20)	4,55 (5,24-4,19) A	1,49 (0,25-1,54) / 1,23 (0,21-1,72)	26(E9)-29(E12)	290 x 870 x 204	540 x 780-70 ³⁾ x 289
KIT-2XE1212-MKE/2E1212-MKE	5,20 (1,50-5,40)	3,42 (6,00-3,42) A	5,60 (1,10-7,20)	4,63 (5,24-4,24) A	1,52 (0,25-1,58) / 1,21 (0,21-1,70)	29	290 x 870 x 204	540 x 780-70 ³⁾ x 289
ETHEREA MULTI SPLIT 3X1 // INVERTER+								
KIT-3XE7712-MBE/3E7712-MBE	5,20 (1,90-7,20)	4,30 (5,28-3,30) A	6,80 (1,40-8,30)	4,63 (4,38-3,94) A	1,21 (0,36-2,18) / 1,47 (0,32-2,11)	26(E7)-29(E12)	290 x 870 x 204	795 x 875-70 ³⁾ x 320
KIT-3XE7715-MBE/3E7715-MBE	5,20 (1,80-7,30)	4,30 (5,00-3,35) A	6,80 (1,60-8,30)	4,72 (5,00-3,93) A	1,21 (0,36-2,18) / 1,44 (0,32-2,11)	26(E7)-29(E15)	290 x 870 x 204	795 x 875-70 ³⁾ x 320
ETHEREA MULTI SPLIT 4X1 // INVERTER+								
KIT-4XE7712-MBE/4E7712-MBE	6,80 (1,90-8,80)	4,12 (5,59-3,56) A	8,60 (3,00-10,60)	4,65 (5,17-4,08) A	1,65 (0,34-2,47) / 1,85 (0,58-2,60)	26(E7)-29(E12)	290 x 870 x 204	795 x 875-70 ³⁾ x 320
KIT-4XE7715-MBE/4E7715-MBE	6,80 (1,90-8,80)	4,12 (5,59-3,56) A	8,60 (3,00-10,60)	4,67 (5,09-4,09) A	1,65 (0,34-2,47) / 1,84 (0,59-2,59)	26(E7)-29(E15)	290 x 870 x 204	795 x 875-70 ³⁾ x 320
KIT-4XE7712-MKE/4E7712-MKE	8,00 (2,80-8,90)	3,76 (5,71-3,09) A	9,40 (3,40-10,50)	4,43 (5,76-3,30) A	2,13 (0,49-2,88) / 2,12 (0,59-3,18)	26(E7) / 29(E12)	290 x 870 x 204	908 x 900 x 320
KIT-4XE7715-MKE/4E7715-MKE	8,00 (2,80-8,90)	3,76 (5,71-3,20) A	9,40 (3,80-10,50)	4,50 (5,31-3,34) A	2,10 (0,49-2,87) / 2,09 (0,64-3,14)	26(E7)-29(E15)	290 x 870 x 204	908 x 900 x 320

GLOBAL REMARKS	Rating conditions	Cooling	Heating
	Inside air temperature	27°C DB / 19°C WB	20°C DB
	Outside air temperature	35°C DB / 24°C WB	7°C DB / 6°C WB

DB: Dry Bulb; WB: Wet Bulb

This model is not suitable to use in heating mode below -5°C with continuous operation (24h operation).

Connectivity restriction : CS-E/XE-MKE units are only compatible with CU-2E15LBE, CU-2E18LBE, CU-3E18LBE, CU-4E23LBE and CU-4E27CBPG outdoor units. No other outdoor unit can be connected.

1) EER and COP classification is at 230 V in accordance with EU directive 2002/31/EC.

2) The Sound pressure level of the units shows the value measured of a position 1 meter in front of the main body and 0,8 meters below the unit. The sound pressure is measured in accordance with Eurovent 6/C/006-97 specification.

3) Add 70 mm for piping port.



FREE MULTI UP TO 4 INDOOR UNITS WITH A SINGLE OUTDOOR UNIT



POSSIBLE INDOOR UNIT COMBINATIONS

POSSIBLE INDOOR UNIT COMBINATIONS	System Capacity (min-max) kW ¹⁾	Capacity Indoor unit kW	INDOOR UNITS		Floor Console	4 Way 60x60 Cassette	Floor ceiling console	Low Static Pressure Hide Away	
			Split Silver or White						
2 ROOMS CU-2E15LBE <ul style="list-style-type: none"> A³⁾: 7,9/10 or 12 B³⁾: 7,9/10 or 12 	4.0-5.6	2.0 2.5 3.2	CS-XE7MKEW / E7MKEW CS-XE9MKEW / E9MKEW CS-XE12MKEW / E12MKEW	 	 		CS-E10KB4EA	CS-E10KD3EA	
CU-2E18LBE <ul style="list-style-type: none"> A³⁾: 7,9/10 or 12 B³⁾: 7,9/10 or 12 	4.0-6.4	2.0 2.5 3.2	CS-XE7MKEW / E7MKEW CS-XE9MKEW / E9MKEW CS-XE12MKEW / E12MKEW	 	 		CS-E10KB4EA	CS-ME10DTEG	CS-E10KD3EA
3 ROOMS CU-3E18LBE <ul style="list-style-type: none"> A³⁾: 7,9/10, 12, 15 or 18 B³⁾: 7,9/10, 12, 15 or 18 C³⁾: 7,9/10, 12, 15 or 18 	4.5-9.0	2.0 2.5 3.2 4.0 5.0	CS-XE7MKEW / E7MKEW CS-XE9MKEW / E9MKEW CS-XE12MKEW / E12MKEW CS-XE15MKEW / E15MKEW CS-XE18MKEW / E18MKEW	 	 		CS-E10KB4EA	CS-ME10DTEG	CS-E10KD3EA
4 ROOMS CU-4E23LBE <ul style="list-style-type: none"> A³⁾: 7,9/10, 12, 15, 18 or 21 B³⁾: 7,9/10, 12, 15, 18 or 21 C³⁾: 7,9/10, 12, 15, 18 or 21 D³⁾: 7,9/10, 12, 15, 18 or 21 	4.5-11.0	2.0 2.5 3.2 4.0 5.0 6.0	CS-XE7MKEW / E7MKEW CS-XE9MKEW / E9MKEW CS-XE12MKEW / E12MKEW CS-XE15MKEW / E15MKEW CS-XE18MKEW / E18MKEW CS-XE21MKEW / E21MKEW	 	 		CS-E10KB4EA	CS-ME10DTEG	CS-E10KD3EA
CU-4E27CBPG <ul style="list-style-type: none"> A³⁾: 7,9/10, 12, 15 or 18 B³⁾: 7,9/10, 12, 15 or 18 C³⁾: 7,9/10, 12, 15 or 18 D³⁾: 7,9/10, 12, 15 or 18 	4.5-13.6	2.0 2.5 3.2 4.0 5.0	CS-XE7MKEW / E7MKEW CS-XE9MKEW / E9MKEW CS-XE12MKEW / E12MKEW CS-XE15MKEW / E15MKEW CS-XE18MKEW / E18MKEW	 	 		CS-E10KB4EA	CS-ME10DTEG	CS-E10KD3EA

1) The combinations must remain within this range, Example: CU-2E15LBE : Total indoor capacity: from 4.0 to 5.6

CS-XE7MKEW : 2.0kW + CS-E10KB4EA : 2.5 kW= 4.5 kW: CORRECT

CS-XE7MKEW : 2.0kW = 2.0 kW: INCORRECT: Total indoor capacity insufficient

CS-E12GFEW : 3.2 kW + CS-E12GFEW : 3.2 kW= 6.4 kW: INCORRECT: Total indoor capacity exceeded

2) A minimum of two indoor units must be connected,

3) A minimum of two indoor units must be connected, minimum combination at 2x1: 7+9,

Connectivity restriction : CS-E/XE-MKE units are only compatible with CU-2E15LBE, CU-2E18LBE, CU-3E18LBE, CU-4E23LBE and CU-4E27CBPG outdoor units, No other outdoor unit can be connected,